

WHO TRAINS OUR NATION'S PEDIATRICIANS?

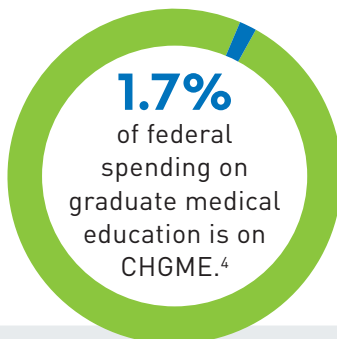


CONGRESS, FUND \$758 MILLION FOR CHGME IN FY 2025.

Care for our nation's children can't wait. ✓

The future of children's health is directly tied to the strength of our pediatric workforce. Congress created the Children's Hospitals Graduate Medical Education (CHGME) program in 1999, and it is the only federal program devoted to the training of pediatricians and specialists like oncologists, cardiologists, and neurologists.

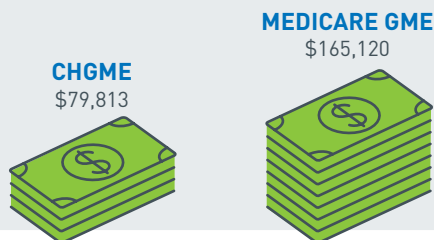
There continues to be a significant shortage due to funding inequities for physician training at adult hospitals compared to children's hospitals.



2 IN 3 CHGME-FUNDED PHYSICIANS

practice in the state where they trained.³

Per resident CHGME funding is **JUST HALF** of what Medicare pays for medical training.⁵



CHGME trains civilian and military



pediatricians and pediatric specialists.



child and adolescent psychiatrists.



pediatric dentists and podiatrists.



family medicine and other adult specialists for their pediatric rotations.¹

CHGME hospitals

MAKE UP 1% of hospitals nationwide



but train **MORE THAN HALF**

of pediatricians and specialists annually.



Learn more about the continued need for CHGME: childrenshospitals.org/CHGME

Contact Us: Elizabeth Brown | elizabeth.brown@childrenshospitals.org

1. "Children's Hospitals Graduate Medical Education (CHGME) Payment Program," Health Resources and Services Administration, May 2021.
2. CHA analysis of 2020 American Medical Association Graduate Medical Education Database.
3. "Report on Residents," Association of American Medical Colleges, December 2021.
4. "Physician Workforce: HHS Needs Better Information to Comprehensively Evaluate Graduate Medical Education Funding," U.S. Government Accountability Office, March 2018.
5. "Comparative Analysis of GME Funding Programs for Children's Hospitals and General Acute Care Teaching Hospitals," Dobson DaVanzo, March 2022.

MOST

physicians in some fields like pediatric rehabilitation receive their training at CHGME hospitals.²