

# Welcome



# Carole Lannon, MD MPH

- Lead, the Roadmap Project
- Anderson Center for Health Systems Excellence, Cincinnati Children's
- Professor of Pediatrics, University of Cincinnati School of Medicine
- Senior Quality Advisor, American Board of Pediatrics



# Roadmap Four-Part Emotional Health Learning Series

## Session 2:

## *Assessing Readiness to Effectively Support Emotional Health*





*Patients and parents advocated for addressing emotional health of children with chronic conditions and their families*

# The Issue

- Child health care providers report barriers to initiating conversations about mental health<sup>1</sup>
  - insufficient training and knowledge in discussing mental health issues
  - limited referral resources
- Parents of children with chronic conditions sometimes have difficulty acknowledging feelings of stress and may underreport symptoms<sup>2</sup>

# Roadmap's Goal

Increase the emotional health and resilience of children with chronic conditions and their families by:

- Raising awareness among patients and families to 'validate' stress and promote self-care
- Raising awareness among clinical teams to address these issues and provide support
- Providing resources and connections for clinicians and families



# Roadmap Readiness Checklist



# Why a Readiness Checklist?

The Pilot Collaborative identified a tool designed to help assess readiness for including emotional health as a routine part of care

# Roadmap Readiness Checklist

- ✓ Awareness of Need
- ✓ Resource/referrals
  - ✓ Mental health providers
  - ✓ Peer-to-peer support, both local and regional/national
- ✓ Crisis plan in place
  - ✓ For pediatric and adolescent patients
  - ✓ For patients and family members
- ✓ Confident and capable to ask, “How are you doing?”

# Checklist Component: Awareness

- Clinicians and staff in our setting are aware of the stresses of living with / parenting a child with a chronic condition and the importance of addressing emotional health for patients / families with chronic pediatric conditions

# A Project Champion: Engaging Colleagues and Staff to Build Awareness

Aliese Sarkissian  
UNC Children's Hospital



# Aliese Sarkissian, MD, MBOE

- UNC Children's Assistant Professor, Division of Pediatric Rheumatology
- Site Co-leader, Roadmap Pilot Collaborative



Are you ready to engage  
your colleagues?

# Start with yourself- what barriers do I see?

- I do not have ...
  - ☐ training in emotional health counseling
  - ☐ time to ask during the patient visit
  - ☐ the emotional health resources to offer
- It is likely your colleagues have the very same ones!
- Present interventions to these barriers in conjunction with the importance of emotional health support for patients with chronic conditions and their families

# Intervention: I do not have the training

- Dr. Erica Sood's excellent talk and model : Normalize- Ask- Pause
  - Summarize key points to present to your division
  - Tailor it to your field (e.g. rheumatology patients often have to administer injectable medications, which often leads to anxiety)
- Roadmap Example Conversation resources (1-page tools or videos)
  - Share one video with the group and discuss
- Don't forget to ask your division- they may already be employing ways to ask!

# Intervention: I do not have the time

- Most often you will only get a "tip of the iceberg", per Dr. Sood
- If you start early (diagnosis day) it becomes a normal part of the visit, included in the review of systems
- Ask your team how much time (and resources) are spent when emotional health problems result in lack of therapeutic adherence?

# Intervention: I do not have resources...

- LISTENING is an intervention!
- You do not have to solve all their problems at one visit, just as you cannot cure their chronic condition at one visit
- Be creative and brainstorm with your division about what you do have
  - Disease foundation websites with peer and family support
  - Ask other divisions what they use in terms of local resources



# Share the interventions and circle back to maintain them

- Pilot your talk in your division
  - What other barriers did they identify?
  - What resources did you brainstorm?
- Take it larger to your department
  - Helps identify other “champions” across divisions
- Return to your division
  - Case conference is not only a time to review diagnostic challenges, but also to review total care for patients

# Developing or Updating a Resource List

Carole Lannon

# Purpose

- Patients and parents working with Roadmap have repeatedly stressed **you don't have to be a mental health professional to make a difference**. Yet, sometimes families will need more support than a physician or subspecialty team can provide.
- This tool is designed to help you think through creating a resource list to provide additional support...or updating or expanding an existing list.



# Checklist Component : Resource List

- We have an up-to-date list of resources to support the emotional health of children with chronic conditions and their families that includes:
  - Mental health providers
  - Peer-to-peer support resources for patients and for families

# National Mental Health Resources

A number of national organizations and initiatives provide free resources or referrals. Several are highlighted here; others also exist.



National Suicide Prevention Lifeline  
<https://suicidepreventionlifeline.org/>  
1-800-273-8255



The Trevor Project provides  
24/7 crisis support services to  
LGBTQ young people  
1-866-488-7386 or text START  
to 678678

2-1-1 has been designated  
as the 3-digit number for  
information and referrals to  
social services and other  
assistance. Links to 200+  
local resources



**Text HELLO to 741741**  
Free, 24/7, Confidential

Trained volunteer Crisis Counselors  
<https://www.crisistextline.org/>



## National Mental Health Resources (continued)

A number of national organizations also have resources available through state chapters or affiliates.

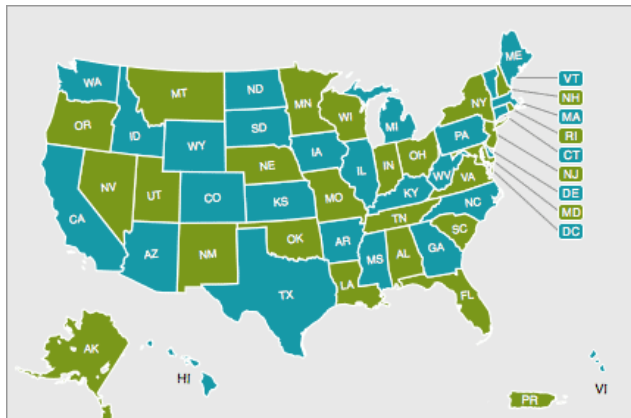


If you or someone you know needs help,  
contact NAMI HelpLine  
Mon. – Fri. from 10 a.m. – 10 p.m. ET

**1-800-950-NAMI (6264)**  
or  
**info@nami.org**

**NAMI (the National Alliance on Mental Illness)** has a helpline and other support and help at <https://nami.org/help>

Family Voices [Family-to-Family Health Information Centers or Affiliate Organizations](#) can help locate resources and support for families with a child or youth with special health care needs

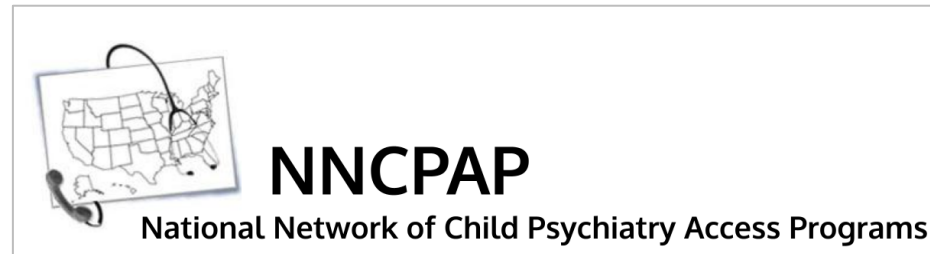


**National Alliance on Mental Illness**  
state organizations and affiliates that  
offer free support. They can be  
identified for your state at  
<https://www.nami.org/findsupport>



# City, County and State Mental Health Resources

Resources may also be available from your city, county, and/or state. Parents are often aware of these resources, and may be able to help you identify them for your resource list.



Many states have a Child Psychiatry Access Program. Services vary by state but can be identified for your state at <https://www.nncpap.org/map>

# Disease-specific Organizations

A number of disease-specific organizations and groups offer patient and family support, services and resources. Some are national (with or without state or local chapters); others are regional. Examples include:

- American Diabetes Association <https://www.diabetes.org/>
- Cystic Fibrosis Foundation <https://www.cff.org/>
- Crohn's and Colitis Foundation  
<https://www.crohnscolitisfoundation.org/>



# Resources at Children's Hospitals

Virtually all hospitals have a Patient and Family Advisory Council (PFAC) and possibly an independent Youth Advisory Council (YAC). The PFAC or YAC can be a resource to help facilitate peer-to-peer mentoring for patients and caregivers. Additionally, PFAC or YAC members can provide feedback about your resource list, and your plans for dissemination.



# Peer-to-Peer Support Resources

Kiona Allen  
Ann & Robert H. Lurie  
Children's Hospital of Chicago





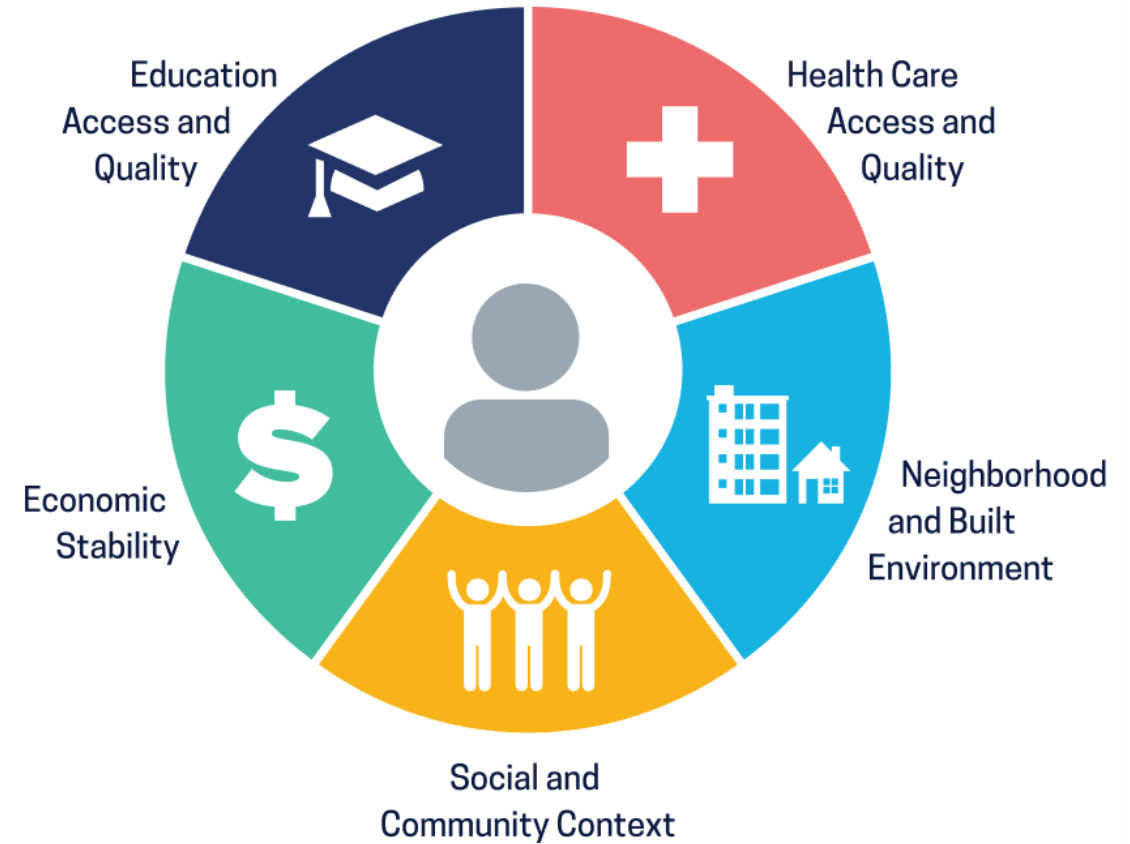
# Kiona Allen, MD

- Lurie Children's Attending Physician, Cardiology & Critical Care Medicine
- Medical Director, Regenstein Cardiac Care Unit
- Medical Director, Single Ventricle Center of Excellence
- Co-Director, NICU-Cardiac Neurodevelopmental Program
- Assistant Professor of Pediatrics, Northwestern University Feinberg School of Medicine
- Co-Lead for the Quality Improvement Workgroup of the Fontan Outcomes Network



# Social Determinants of Health & Wellness

- Peer-to-peer supports can be a major social determinant of physical and mental health
  - Provide social and community supports
  - Enhance education
  - Share information that improves access to resources
- Providers can be a positive SDOH by leveraging the strength of the medical community (center-level, locally, regionally, and nationally)



**Social Determinants of Health**


Copyright-free

 **Healthy People 2030**

# Building Community

Facebook Page

## Single Ventricle Center of Excellence



**Lurie Children's Single Ventricle Center of Excellence**  
@LurieSV · Medical & Health

Send Message

Home Services Reviews Shop More

Liked Search

### About

The Single Ventricle Center of Excellence at Lurie Children's partners with patients and families to care for children and young adults living with sl...

222 people like this including 76 of your friends

248 people follow this

<https://www.luriechildrens.org/en/specialties-conditions/single-ventricle-center-of-excellence/>

(312) 227-8588

Send Message

Medical & Health


### Suggest Edits

Is this the right phone number for this page?

+13122278588

Yes Unsure No


### Photos



### Create Post

Photo/Video Check In Tag Friends

**Lurie Children's Single Ventricle Center of Excellence**  
Favorites · September 26 at 7:55 AM ·



**Conquering CHD - Illinois**  
September 25 at 2:00 PM ·


SAVE THE DATE!!!  
Saturday Nov. 13th, 2021  
Brookfield Zoo Awareness Tree Decorations!  
More info to come! Keep a lookout for the event! ... See More

2

Like Comment Share

Write a comment...

Facebook Group



Group by Lurie Children's Single Ventricle Center of Excellence

## Fontan Futures at Lurie Children's

Private group · 112 members

+ Invite

About Discussion Rooms Topics Members Events Media

Write something...

Live Video Photo/Video Room

### Featured

**Rules**  
Here's what members can expect in the group.

- 1 Be Kind and Courteous
- 2 No Hate Speech or Bullying
- 3 No Promotions or Spam

Show All Rules

### About

The Fontan Futures Family Support Group brings together patients, families, and providers to support each other through the lifelong journey of ... See More

**Private**  
Only members can see who's in the group and what they post.

**Visible**  
Anyone can find this group.

**General**

### Popular topics in this group

#chd 6 posts

#all4your1 5 posts

#care4life 1 post


See all

### Recent Posts


**Lurie Children's Single Ventricle Center of Excellence**  
shared a post  
Admin · September 25 at 1:40 PM ·

We hope to see you soon! Please check your email for your invitation from Emile so you can join our team and other Lurie families for a Zoom break during the event!!

Lurie SV Newsletter



## Single Ventricle Center of Excellence




Hello Lurie Children's Patients and Families,

We are emailing to remind you about 3 exciting virtual events for patients living with Fontan circulation and their families. We would love to have you and/or your families participate in any of the events! Thank you for allowing Lurie Children's to be a part of your journey. We hope to see you at these events to help us identify the challenges we face, but also to share in the incredible joy of your kid's and family's many amazing milestones!

### FON Fall Learning Session

Friday, October 29, 9:00am – 11:00am CST (Patients and Families welcome)




The FON Fall Learning Session will be an opportunity for parents, patients, caregivers, clinicians, researchers, and anyone else involved in the community to come together to improve outcomes for children and adults living with Fontan circulation! Our Lurie Children's team is very proud to be one of the founding and pilot centers for this new network and we would love for you to join us to learn more about the exciting work we will be a part of moving forward. For an overview of the day, [view the agenda at a glance](#).

- 9am-10am: Lurie Children's Meet and Greet
- 10am-11am: FON Fall 2021 Virtual Learning Session

Register for Lurie Meet and Greet Register for FON Learning Session

### 3rd Annual Single Ventricle Patient Day

Saturday, October 30th, 10am – 4pm CST (Only patients over 14 years old)



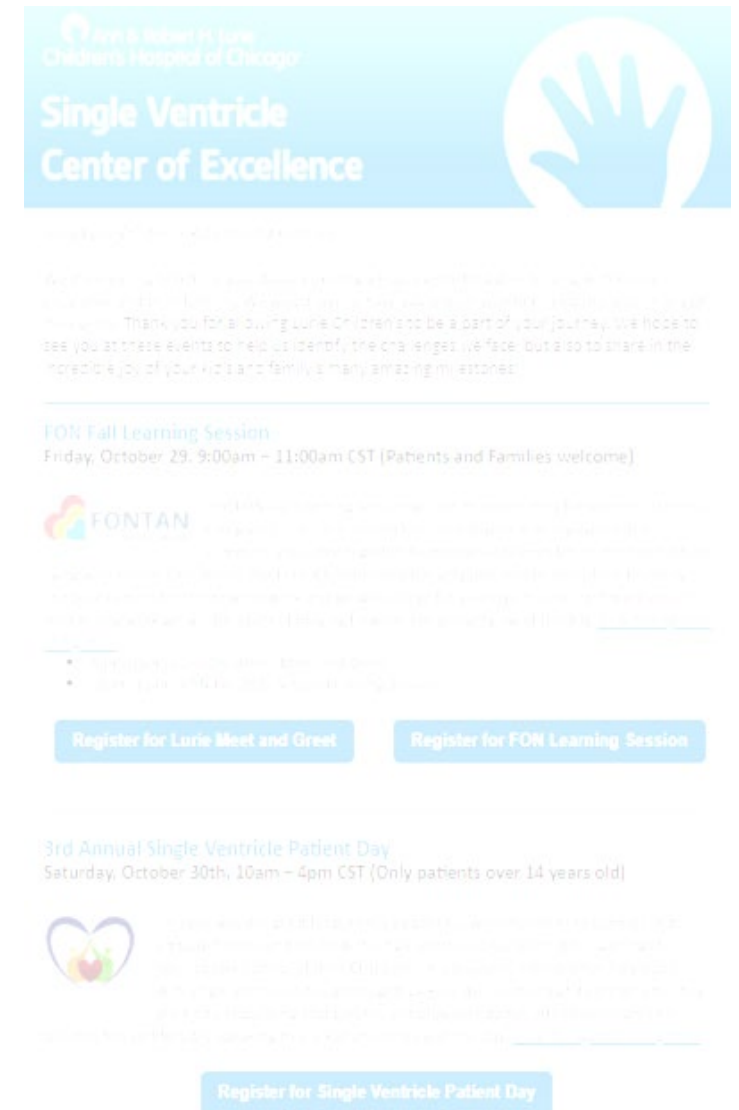
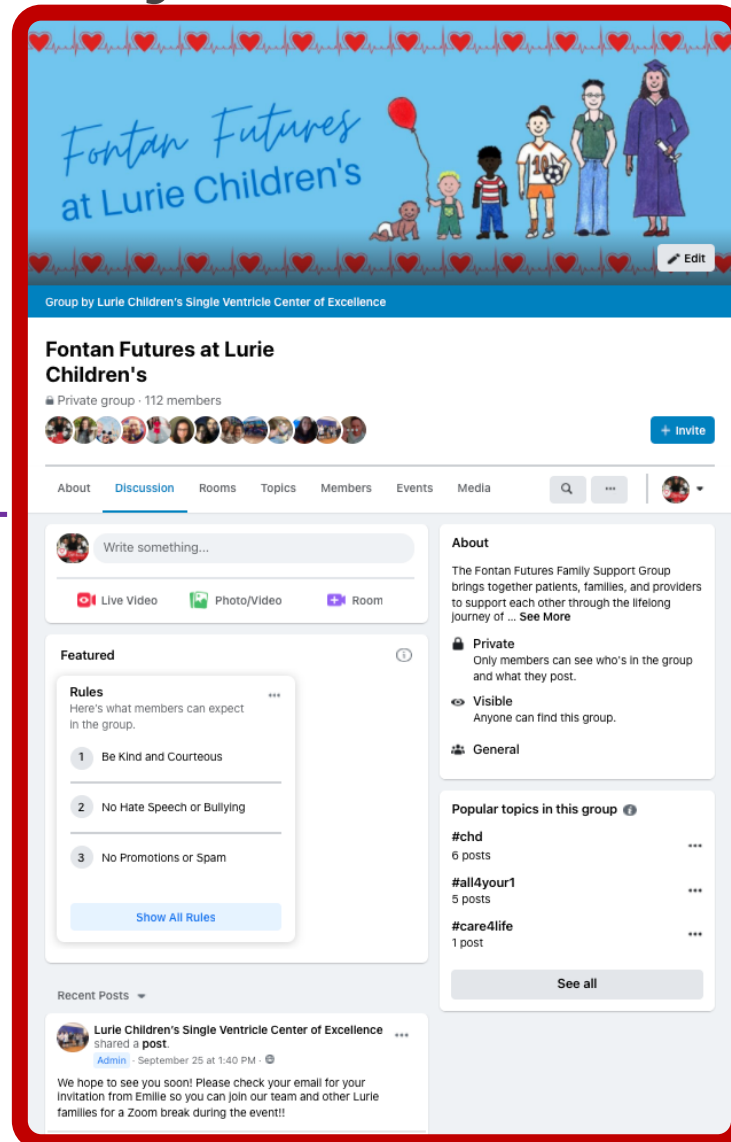
This day was designed for patients by patients with the intent to connect and empower teens and adults with single ventricle circulation, while gaining the tools to take control of their CHD care. This session is intended for individuals with single ventricle circulation aged 14+, as well as their significant others. They are kindly requesting that parents and providers do not attend to ensure that patients feel comfortable speaking freely. For an overview of the day, [view the agenda at a glance](#).

Register for Single Ventricle Patient Day

# Building Community – Center Level



## Facebook Group





# Building Community – Center Level



## Fontan Futures at Lurie Children's

Private group · 112 members



+ Invite

About Discussion Rooms Topics Members Events Media

Write something...

Live Video Photo/Video Room

### Featured

#### Rules

Here's what members can expect in the group.

- 1 Be Kind and Courteous
- 2 No Hate Speech or Bullying
- 3 No Promotions or Spam

Show All Rules

Recent Posts

Lurie Children's Single Ventricle Center of Excellence shared a post.  
Admin · September 25 at 1:40 PM ·  
We hope to see you soon! Please check your email for your invitation from Emilie so you can join our team and other Lurie families for a Zoom break during the event!!!

### About

The Fontan Futures Family Support Group brings together patients, families, and providers to support each other through the lifelong journey of ... [See More](#)

**Private**  
Only members can see who's in the group and what they post.

**Visible**  
Anyone can find this group.

**General**

### Popular topics in this group

**#chd**  
6 posts

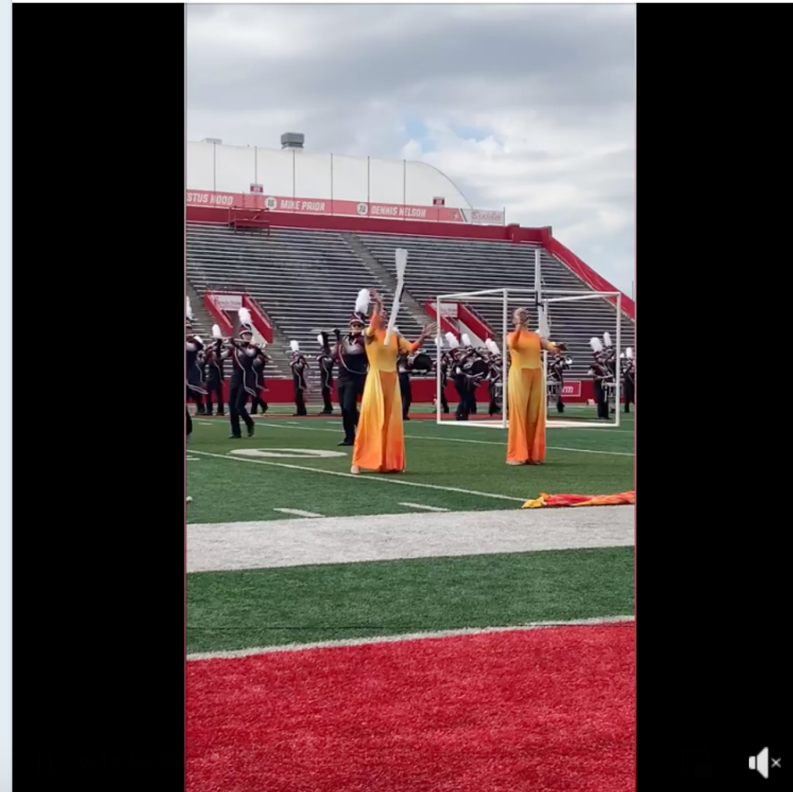
**#all4your1**  
5 posts

**#care4life**  
1 post

See all



Just a glimpse of her hard work and dedication over the last 4 years of high school in marching band. This was such a big deal for her to be able to do and be competitive with other schools. So thankful for the little things...As always Thank You to our Heart Center and many thanks to our Neurodevelopment clinic ❤️❤️. You made her high school experience a great one! College is next!!! ❤️



asked a question · September 19, 2021 ·

Are there any "older" (age 8+) heart warriors that would be willing to talk with my 4 year old daughter? She's 2 weeks post Fontan and I think she would love processing with someone who's had a similar experience. She's VERY verbal.

She keeps asking friends and family about their surgeries, ie:

- Do you have a scar?
- Did you have tubes?
- What happened while you were there?
- Did you have to take yucky medicine?

Thanks in advance ❤️

8

6 Answers · Seen by 95

Like

Answer

All Answers

My daughter is going to be 5 in October and is also very verbal. Had open heart in April, if you don't find someone a little older, let me know and I'd be happy to let her FaceTime or whatever. 😊

She had a lot of feelings about taking iron after and ... [See more](#)

Like · Reply · Award · 17w · Edited

My son is 4 and very verbal. Had Fontan in February. People ask him about his scar all summer. He tells people

"my heart needed help so Dr E cut me open to fix it and auntie kiona and auntie Michelle helped make it better". (All his choice of words af...) [See more](#)

Like · Reply · Award · 17w · Edited

Hi Melissa! Allison is 8.5! She had her Fontan in 2016. We have met you guys at a couple Congenital Heart Walks and go to church with Pam and Joe (who tell me all the time how great L is doing!). If you want to have L talk with Allison, send me a note.... [See more](#)

Like · Reply · Award · 17w · Edited

Hi Melissa I might be too old for your sweet girl, but I am 28 and I've had the fontan. I've got the scars, I remember the tubes, and the beeping machines drove me nuts! I lived in the hospital for 2.5 years in the old one in Lincoln Park. My best memo... [See more](#)

Like · Reply · Award · 17w

you are an inspiration! My love daughter is seven and had her fontan in April 2018. You give us so

Like · Reply · Award · 16w

### About

The Fontan Futures Family Support Group brings together patients, families, and providers to support each other through the lifelong journey of living with single ventricle congenital heart disease in order to achieve our shared goal of a bright and productive future. It is specifically geared towards the patients and families at Ann & Robert H. Lurie Children's Hospital of Chicago, but all individuals are welcome.

### Terms and Conditions of Use:

We think it is important for you to know how we handle information communicated via the Internet on our site. This Terms & Conditions statement outlines our practices and our sensitivity to your right to privacy. We reserve the right to revoke access at any time for any reason.

### Registration and Use:

An individual must be age 13 or older, and a verified patient of Ann & Robert H. Lurie Children's Hospital of Chicago to participate in Fontan Futures at Lurie Children's. Fontan Futures at Lurie Children's is not a source of clinical advice. Our goal is to provide a safe, private forum for open discussion between parents whose children have come through our program.

The site will be reasonably monitored to ensure the conversation stays topical and courteous. Lurie Children's will make its best effort to provide a timely response in removing inappropriate comments. However, we rely on the integrity and good sense of you the user; by use you agree to accept legal responsibility for your own comments. Please be careful with any personal and medical information you disclose in the forum.

Specific questions or issues regarding the care and treatment of a patient will not be processed or responded to electronically. If you have a question about the care or treatment of a patient, or are seeking medical advice or treatment, you must contact your provider directly. This site is not a substitute for appropriate and timely contact with your physician.

### Web Site Links:

Links to Web sites not managed by Lurie Children's may be offered on Fontan Futures at Lurie Children's. These website link(s) are for informational purposes only. Lurie Children's does not endorse and has not verified the accuracy of the information in/on these Web sites, and the information found on these Web sites should not be relied upon for purposes of treatment or diagnosis.



# Building Community – Center Level



SOME ASSEMBLY REQUIRED

## Every hero needs a sidekick.

Helping support cardiac families in their moment of need.

### OUR MISSION

Some Assembly Required is a nonprofit 501(c)(3) organization established to assist families with children in cardiac intensive care units (CCU) by alleviating the financial burden of parking fees.

As an organization founded by heart families for heart families, we know firsthand the overwhelming emotions that come when your child is born with a congenital heart disease and how difficult this journey is. If we can help carry the load with you by covering your parking expenses so you can focus on your heart hero, then we have lived up to our mission.



## Cardiac Care Unit Celebrates Heart Warriors



September 27, 2017

Share [f](#) [t](#) [in](#) [e](#)

For many of our patient-families, Lurie Children's becomes a second home, an extended family. This is especially true for our [Heart Center](#) families. When inpatient, patients often form bonds and friendships with one another.

To celebrate these special relationships, the Heart Center hosted its first annual [Regenstein Cardiac Care Unit \(CCU\) BBQ](#) on September 23, 2017. "We're so lucky to take care of such amazing patients and families," says Genny Frey, RN, MSN, Director of the Cardiac Care Unit. "It was one of our patients, Cordelia, who had the idea for this celebration. She asked, 'Is there ever a time when the doctors, nurses, staff and patients can get together outside the hospital and just have fun?'"


Thanks to Meghan Matlin, RN, Clinical Education Specialist for the CCU, Cordelia got to see her vision come to life. 700 Heart Center patients and families and Lurie Children's Heart Center physicians, nurses and staff came together for a day of fun, good food, music and most importantly reuniting and celebrating Lurie Children's heart warriors. "It was great to come together outside the hospital and celebrate with other heart warriors and all those who take care of us," says Cordelia, 14.



# Building Community – Regional Level

Facebook Page

## Single Ventricle Center of Excellence



**Lurie Children's Single Ventricle Center of Excellence**  
@LurieSV - Medical & Health

Send Message

Home Services Reviews Shop More

Liked Search

**About** See All

The Single Ventricle Center of Excellence at Lurie Children's partners with patients and young families living with... See More

222 people like this including 76 of your friends

248 people follow this

<https://www.luriechildrens.org/en/specialties-conditions/single-ventricle-center-of-excellence/>

(312) 227-8588

Send Message

Medical & Health


**Suggest Edits**

Is this the right phone number for this page?

+13122278588

Yes Unsure No

**Photos** See All



**Create Post**

Photo/Video Check In Tag Friends




**Save The Date!**  
Saturday November 13th, 2021  
Brookfield Zoo Free Awareness Decoration!  
More information to come!

**Conquering CHD - Illinois**  
September 26 at 2:00 PM

SAVE THE DATE!!!  
Saturday Nov. 13th, 2021  
Brookfield Zoo Awareness Tree Decorations!  
More info to come! Keep a lookout for the event! ... See More

Like Comment Share

Write a comment...



Fontan Futures at Lurie Children's

Group by Lurie Children's Single Ventricle Center of Excellence

Photo/Video Check In Tag Friends

**Fontan Futures at Lurie Children's**  
Photo group · 112 members

Invite

About Discussion Rules Topics Members Events Video Search

Who can see this...

Live/Video Photo/Video Reels

**About**

The Fontan Futures Family Support Group brings together patients, families, and providers to support each other through the lifelong journey st... See More

**Private**  
Only members can see who's in the group and what they post.

**Visible**  
Anyone can find this group.

**General**

**Popular topics in this group**

- #chd 6 posts
- #all4your1 5 posts
- #care4life 1 post

[Show All Rules](#)

**Recent Posts**

Lurie Children's Single Ventricle Center of Excellence · 1 post · 10 min

We hope to see you soon! Please check your email for your invitation from Emile so you can join our team and other Lurie families for a Zoom break during the event!



## Single Ventricle Center of Excellence

Fontan Futures at Lurie Children's

Fontan Futures at Lurie Children's is a family support group for patients, families, and providers. Thank you for allowing Lurie Children's to be a part of your journey. We hope to see you at these events to help us identify the challenges we face, but also to share in the incredible joy of your child and family's many amazing milestones!

**FON Fall Learning Session**  
Friday, October 29, 9:00am – 11:00am CST (Patients and Families welcome)

**Fontan Futures**  
Fontan Futures is a family support group for patients, families, and providers. We hope to see you at these events to help us identify the challenges we face, but also to share in the incredible joy of your child and family's many amazing milestones!

- Registration for the event is free and open to all.
- Registration for the event is free and open to all.

[Register for Lurie Meet and Greet](#) [Register for FON Learning Session](#)

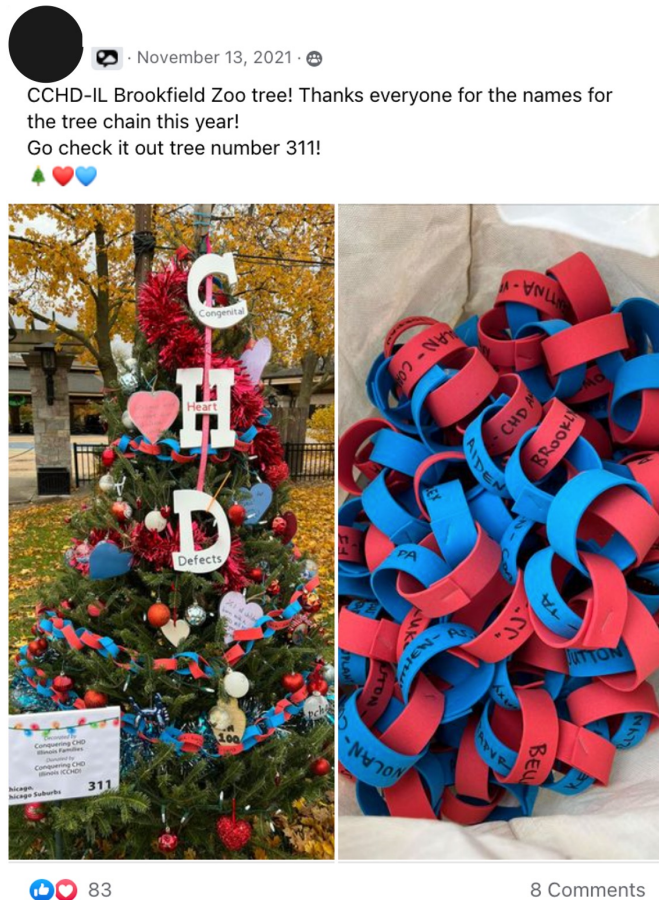
**3rd Annual Single Ventricle Patient Day**  
Saturday, October 30th, 10am – 4pm CST (Only patients over 14 years old)

Fontan Futures at Lurie Children's is a family support group for patients, families, and providers. We hope to see you at these events to help us identify the challenges we face, but also to share in the incredible joy of your child and family's many amazing milestones!

[Register for Single Ventricle Patient Day](#)



# Building Community – Regional Level



## Conquering CHD -Illinois Chat

Private group · 428 members



+ Invite

About Discussion Rooms Topics Members Events Media Files

### About this group

This group is to connect Illinois families affected by Congenital Heart Disease (CHD), as well as problems with the heart caused by childhood diseases.

This is a place to share your story, ask questions and learn from one another and hopefully, form friendships.

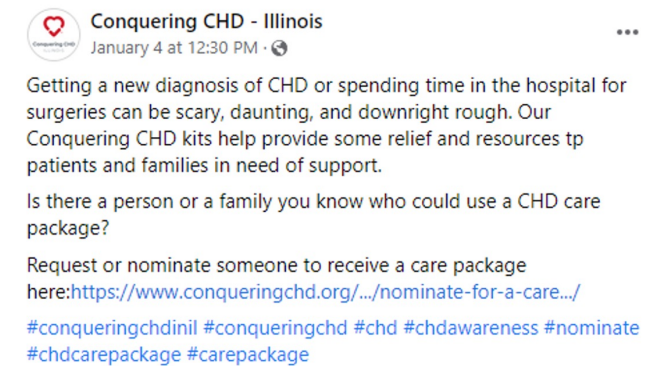
We are not medical professionals but heart families. We are here to share experiences and our journey. Please leave medical questions to your healthcare team. While you can ask for references about care, please know we will not allow anyone to make comments about any hospital staff or hospital. This is not the place and your comments will be removed and can result in your removal from the group as well.

\*Please remain civil and respectful at all times and be mindful of your tone as best you can, and language (no foul language please). This is a friendly and safe space and we know you will keep it that way!

Please no sharing of personal fundraising or any personal sells. Sharing events that connect the heart community (such as hospital events) are welcomed. See less

## Group rules from the admins

- No personal or charity fundraising**  
Conquering CHD Illinois is a 501c3 nonprofit charity. We know all heart families can use financial support. What we do for one family or other nonprofit, we must do for all. This is why we only allow fundraising for our charity on this page. Thanks for understanding.
- Be Kind and Courteous**  
We're all in this together to create a welcoming environment. Let's treat everyone with respect. Healthy debates are natural, but kindness is required.
- Respect Everyone's Privacy**  
Being part of this group requires mutual trust. Authentic, expressive discussions make groups great, but may also be sensitive and private. What's shared in the group should stay in the group.
- Respect for hospitals and dedicated staff**  
While we want to assist heart families to make the best decisions in care, we will not allow anyone to speak poorly of hospital staff and hospitals. Your comments and/or you will be removed.



4

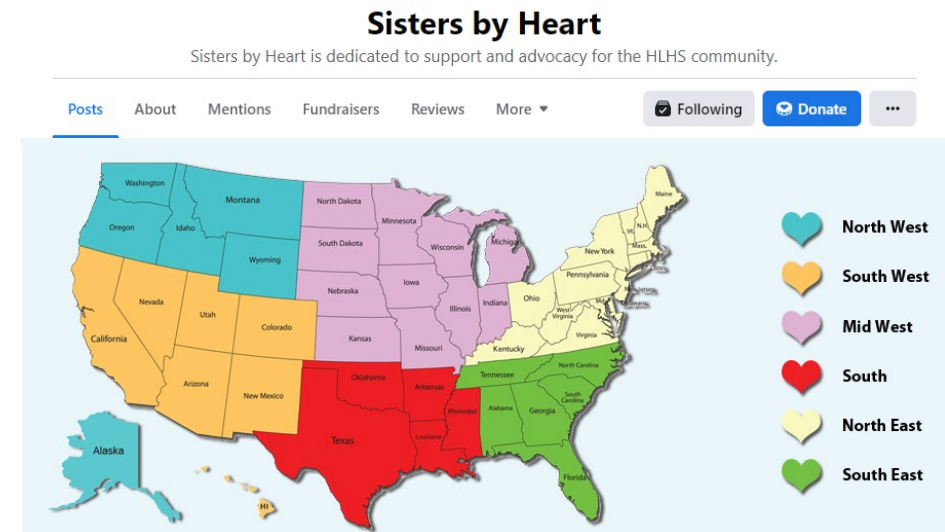
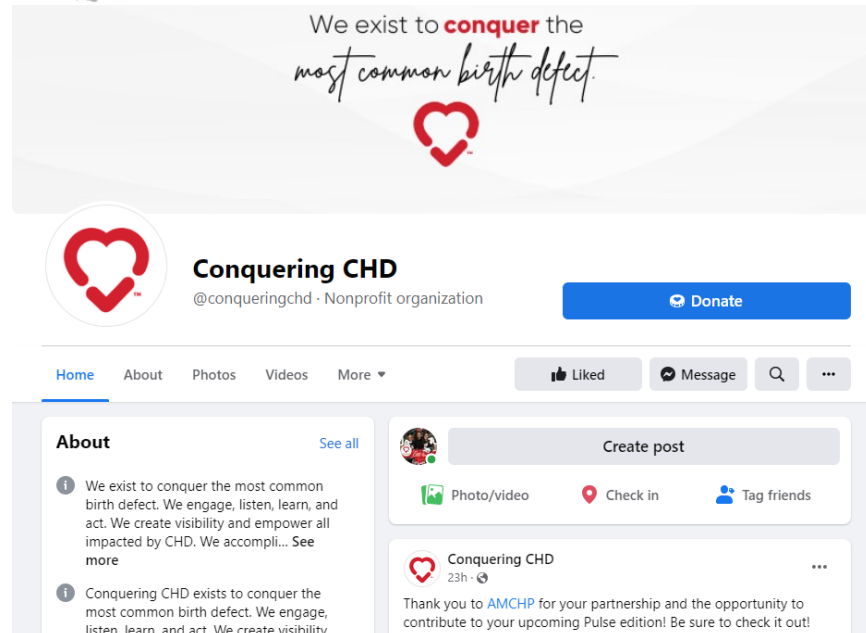
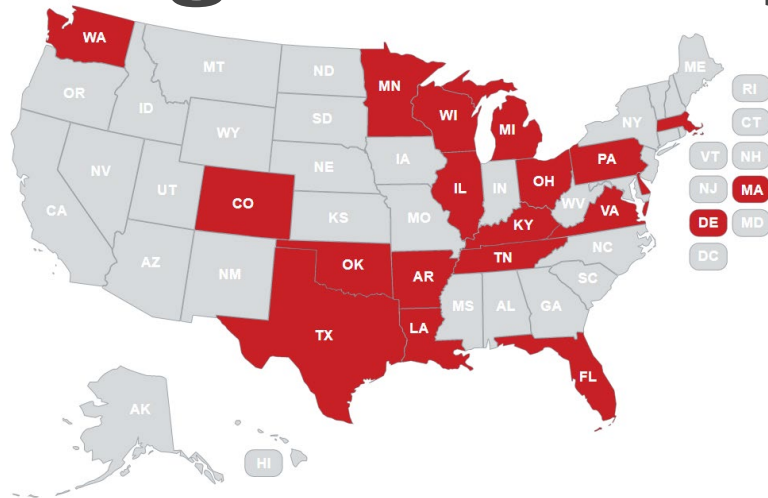
Like

Comment

Share



# Building Community – National Level



## Supporting and Linking Families Across the Country

Linked by Heart advances the mission of Sisters by Heart by fostering connections amongst the single ventricle community through regional, online support and by providing local resources to families.

Linked by Heart is generously run by parent volunteers known as "Regional Coordinators." Our Regional Coordinators are moms from across the nation who understand first-hand the experience of having a child with single ventricle anatomy. These Coordinators strive to connect families with others in their area for local support and information.

Any family affected by single ventricle anatomy is invited to register with the Linked by Heart Network and/or join the Regional Facebook group in their area.

# Building Community – National Level



**Single Ventricle Center of Excellence**

Lurie Children's Single Ventricle Center of Excellence  
@LurieSVCenter of Excellence

Send Message

Home · Services · Reviews · Shop · More

Liked · Search · Filter

**About**

The Single Ventricle Center of Excellence at Lurie Children's partners with patients and families to care for children and young adults living with SV. See More.

222 people like this including 78 of your friends

248 people follow this

How do you feel about this page? New, good, bad, or not sure. Tell us what you think.

(312) 227-6588

Send Message

Suggest Edits

Is this the right phone number for this page?

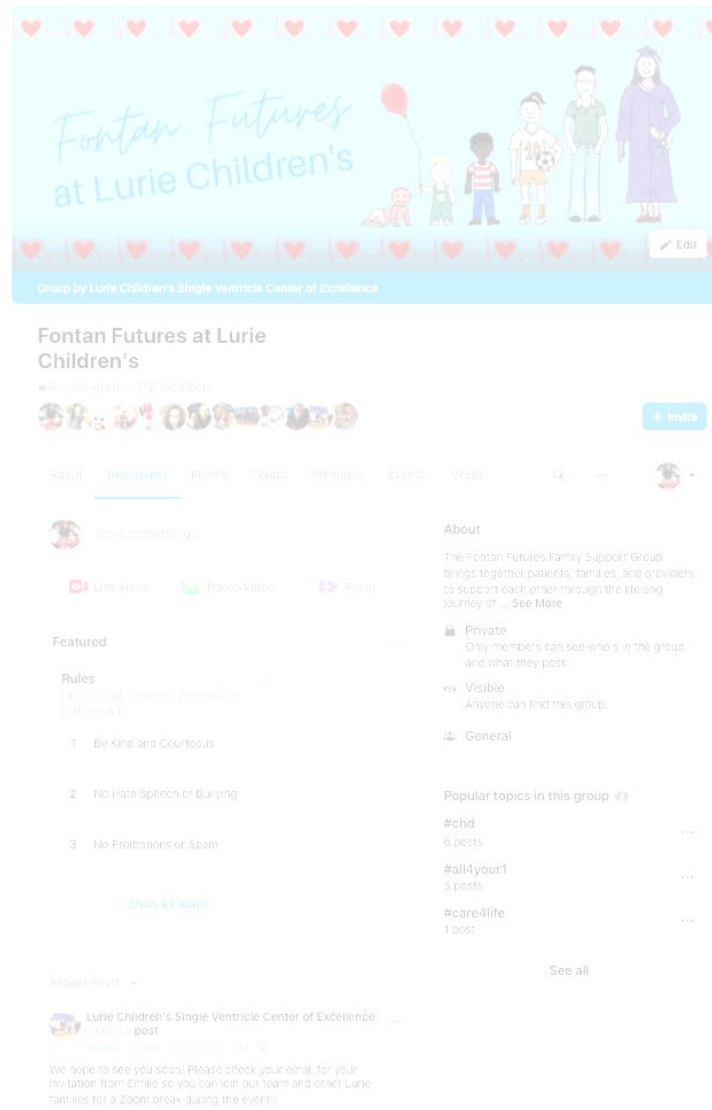
+13122278588

Yes · Unsure · No

**Photos**

SAVE THE DATE!! Saturday Nov. 13th, 2021 Brookfield Zoo Awareness Tree Decorations! More info to come! Keep a lookout for the event! See More

Like · Comment · Share



**Fontan Futures at Lurie Children's**

Group by Lurie Children's Single Ventricle Center of Excellence

Fontan Futures at Lurie Children's

112 members

Invite

About · Discussion · Rules · Topics · Members · Events · Video

Who's online...

Live/Video · Photo/Video · Reels

**Featured**

**Rules**

1. Be Kind and Courteous
2. No Hate Speech or Bullying
3. No Promotions or Spam

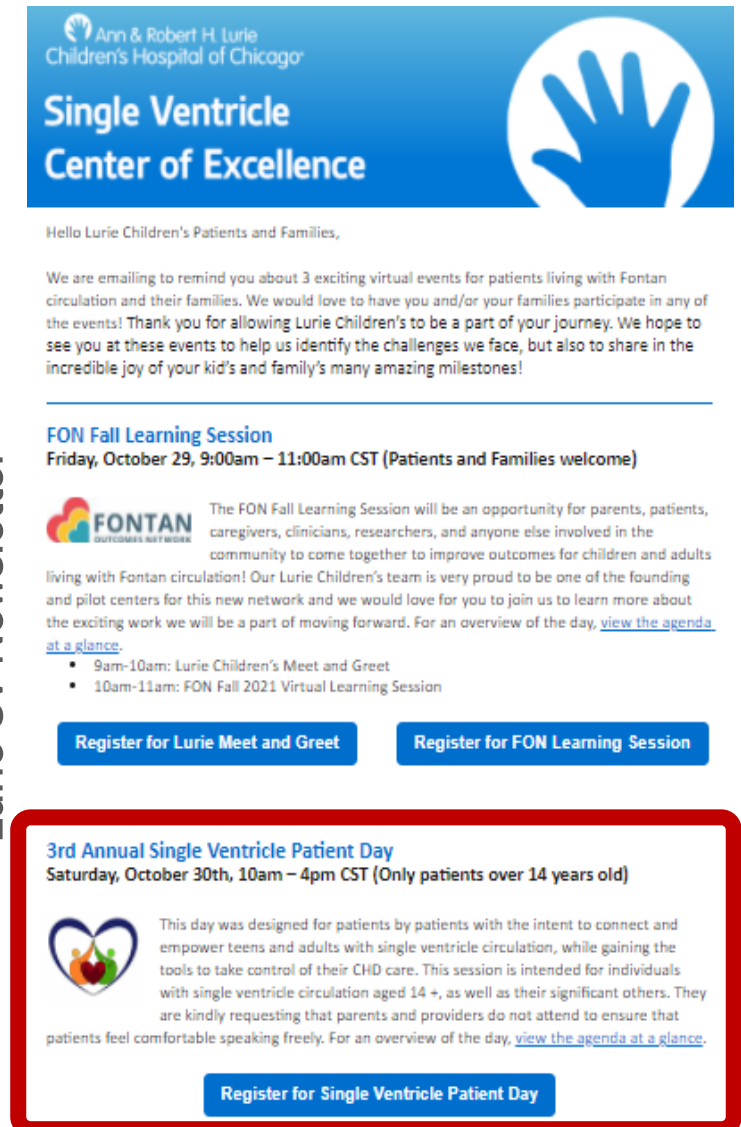
Show All Rules

**Recent Posts**

Lurie Children's Single Ventricle Center of Excellence · 1 post

Send Message · Like · Comment · Share

We hope to see you soon! Please check your email for your invitation from Emile so you can join our team and other Lurie families for a Zoom break during the event!



Ann & Robert H. Lurie Children's Hospital of Chicago

**Single Ventricle Center of Excellence**

Hello Lurie Children's Patients and Families,

We are emailing to remind you about 3 exciting virtual events for patients living with Fontan circulation and their families. We would love to have you and/or your families participate in any of the events! Thank you for allowing Lurie Children's to be a part of your journey. We hope to see you at these events to help us identify the challenges we face, but also to share in the incredible joy of your kid's and family's many amazing milestones!

---

**FON Fall Learning Session**  
Friday, October 29, 9:00am – 11:00am CST (Patients and Families welcome)

**FON** OUTCOMES NETWORK

The FON Fall Learning Session will be an opportunity for parents, patients, caregivers, clinicians, researchers, and anyone else involved in the community to come together to improve outcomes for children and adults living with Fontan circulation! Our Lurie Children's team is very proud to be one of the founding and pilot centers for this new network and we would love for you to join us to learn more about the exciting work we will be a part of moving forward. For an overview of the day, [view the agenda at a glance](#).

- 9am-10am: Lurie Children's Meet and Greet
- 10am-11am: FON Fall 2021 Virtual Learning Session

[Register for Lurie Meet and Greet](#) [Register for FON Learning Session](#)

---

**3rd Annual Single Ventricle Patient Day**  
Saturday, October 30th, 10am – 4pm CST (Only patients over 14 years old)

This day was designed for patients by patients with the intent to connect and empower teens and adults with single ventricle circulation, while gaining the tools to take control of their CHD care. This session is intended for individuals with single ventricle circulation aged 14+, as well as their significant others. They are kindly requesting that parents and providers do not attend to ensure that patients feel comfortable speaking freely. For an overview of the day, [view the agenda at a glance](#).

[Register for Single Ventricle Patient Day](#)

Lurie SV Newsletter

# Building Community – National Level



FONTAN OUTCOMES NETWORK PRESENTS:

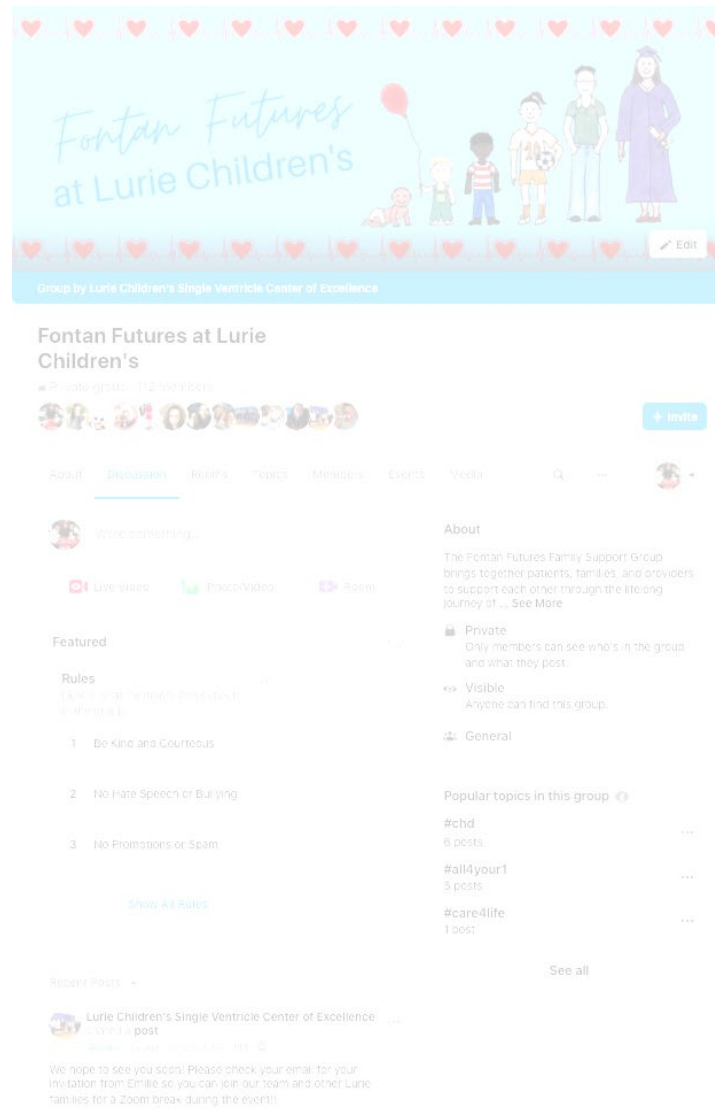
**SINGLE VENTRICLE  
PATIENTS DAY:  
TEENS AND ADULTS**

OCTOBER 30TH, 2021





# Building Community – Any way you can...



## Single Ventricle Center of Excellence

Hello Lurie Children's Patients and Families,

We are emailing to remind you about 3 exciting virtual events for patients living with Fontan circulation and their families. We would love to have you and/or your families participate in any of the events! Thank you for allowing Lurie Children's to be a part of your journey. We hope to see you at these events to help us identify the challenges we face, but also to share in the incredible joy of your kid's and family's many amazing milestones!

### FON Fall Learning Session

Friday, October 29, 9:00am – 11:00am CST (Patients and Families welcome)

The FON Fall Learning Session will be an opportunity for parents, patients, caregivers, clinicians, researchers, and anyone else involved in the community to come together to improve outcomes for children and adults living with Fontan circulation! Our Lurie Children's team is very proud to be one of the founding and pilot centers for this new network and we would love for you to join us to learn more about the exciting work we will be a part of moving forward. For an overview of the day, [view the agenda at a glance](#).

- 9am-10am: Lurie Children's Meet and Greet
- 10am-11am: FON Fall 2021 Virtual Learning Session

[Register for Lurie Meet and Greet](#)
[Register for FON Learning Session](#)

### 3rd Annual Single Ventricle Patient Day

Saturday, October 30th, 10am – 4pm CST (Only patients over 14 years old)

This day was designed for patients by patients with the intent to connect and empower teens and adults with single ventricle circulation, while gaining the tools to take control of their CHD care. This session is intended for individuals with single ventricle circulation aged 14+, as well as their significant others. They are kindly requesting that parents and providers do not attend to ensure that patients feel comfortable speaking freely. For an overview of the day, [view the agenda at a glance](#).

[Register for Single Ventricle Patient Day](#)

Lurie SV Newsletter

# Building Community



Hello Lurie Children's Patients and Families,

We are emailing to remind you about 3 exciting virtual events for patients living with Fontan circulation and their families. We would love to have you and/or your families participate in any of the events! Thank you for allowing Lurie Children's to be a part of your journey. We hope to see you at these events to help us identify the challenges we face, but also to share in the incredible joy of your kid's and family's many amazing milestones!

## FON Fall Learning Session

Friday, October 29, 9:00am – 11:00am CST (Patients and Families welcome)

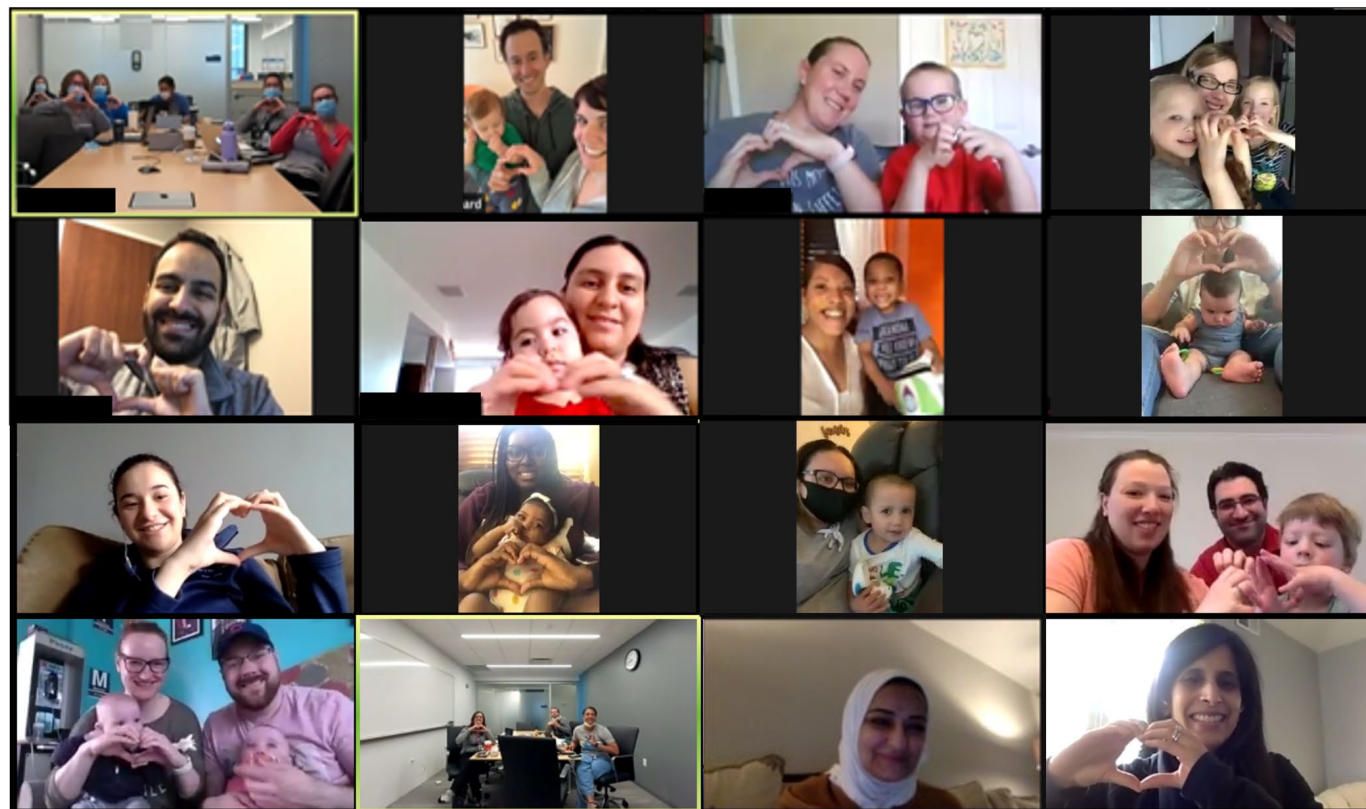


The FON Fall Learning Session will be an opportunity for parents, patients, caregivers, clinicians, researchers, and anyone else involved in the community to come together to improve outcomes for children and adults living with Fontan circulation! Our Lurie Children's team is very proud to be one of the founding and pilot centers for this new network and we would love for you to join us to learn more about the exciting work we will be a part of moving forward. For an overview of the day, [view the agenda at a glance.](#)

- **9am-10am: Lurie Children's Meet and Greet**
- 10am-11am: FON Fall 2021 Virtual Learning Session

[Register for Lurie Meet and Greet](#)

[Register for FON Learning Session](#)



# Building Confidence and Competence

Mary Pat Gallagher  
Hassenfeld Children's Hospital



# Checklist Component : Confidence & Competence

- Members of our practice setting are confident and competent initiating discussions about emotional health topics with children and adolescents with chronic medical conditions and their family members



# Mary Pat Gallagher, MD

- Director, Robert I. Grossman, MD and Elisabeth J. Cohen, MD Pediatric Diabetes Center at Hassenfeld Children's Hospital at NYU Langone
- Team member, Roadmap Pilot Collaborative



# Developing confidence and competence: Introduction of concepts

Emotional and behavioral health ...

- are the foundation of wellness.
- are often negatively impacted by living with chronic health conditions.
- impact health outcomes.
- can be addressed by all team members.

# Developing confidence and competence: Baseline comfort level

- “Normalize, Ask, Pause”- works for staff too
- Encourage honest feedback about feelings of resistance
- Debriefing sessions
- Anonymous electronic polls for self-assessments of knowledge, comfort levels, and identification of barriers

# Developing confidence and competence:

## Building confidence

- Didactic sessions
- Debriefing sessions
- Re-assessment of team members' comfort level
- Ongoing education and discussion
- Input from Family Advisors and Youth Advisors

# Including families

- Authentic
- Meaningful
- Personal



# Toolbox

- Weekly meetings with behavioral health team members
- Dedicated time for behavioral health in meetings
- Welcome honest feedback about hesitancy and worries
- Ask behavioral health team to listen, validate, educate
- Role play
- Plan small tests of change
- Communicate and ***celebrate*** progress

# Getting started

- Memorize the phrase(s), then be prepared for what comes next
- We need to be **authentically** non-judgmental
- Our language will reflect our attitudes and beliefs
- There may be some "big feelings"
- Recognize you don't need to "fix" everything

# In summary

- Find a physician champion
- Recruit behavioral health team support- **critical**
- Share youth and family stories- can be transformative
- Engage people from every discipline
- Encourage self-reflection before launching
- Recognize that listening might **be** the intervention

# Developing or Updating a Crisis Plan

Carole Lannon



# Checklist Component: Crisis Plans

- Our practice setting has a crisis plan in place to handle mental health emergencies, including suicidality
  - for patients
  - for family members (e.g., parents, siblings)

# Q/A & Discussion

All Participants



# Webinar #3

## Making a Difference in the Emotional Life of Children in Your Care

[Date TBD]

Learn to apply strategies to support emotional health and resilience for children with chronic conditions and their families.



Children's Hospital Association

600 13th St., NW | Suite 500 | Washington, DC 20005 | 202-753-5500  
16011 College Blvd. | Suite 250 | Lenexa, KS 66219 | 913-262-1436  
[www.childrenshospitals.org](http://www.childrenshospitals.org)



The  
Roadmap  
Project

The Roadmap Project  
[ABP\\_Fdn\\_Project@cchmc.org](mailto:ABP_Fdn_Project@cchmc.org)  
<https://www.abp.org/foundation/roadmap>



THE AMERICAN BOARD *of* PEDIATRICS  
*Certifying excellence in pediatrics for a healthier tomorrow*

THE AMERICAN BOARD *of* PEDIATRICS  
**FOUNDATION**

The American Board of Pediatrics Foundation  
<https://www.abp.org/foundation>