

# A School Based Partnership to Proactively Address Mental Health

Carey Spain, MSW, MBA, LCSW, LSCSW, ACM

Sr. Director of Integrated Community Care

Children's Mercy Kansas City

March 3, 2022



LOVE WILL.





386 beds

12,543 Admissions

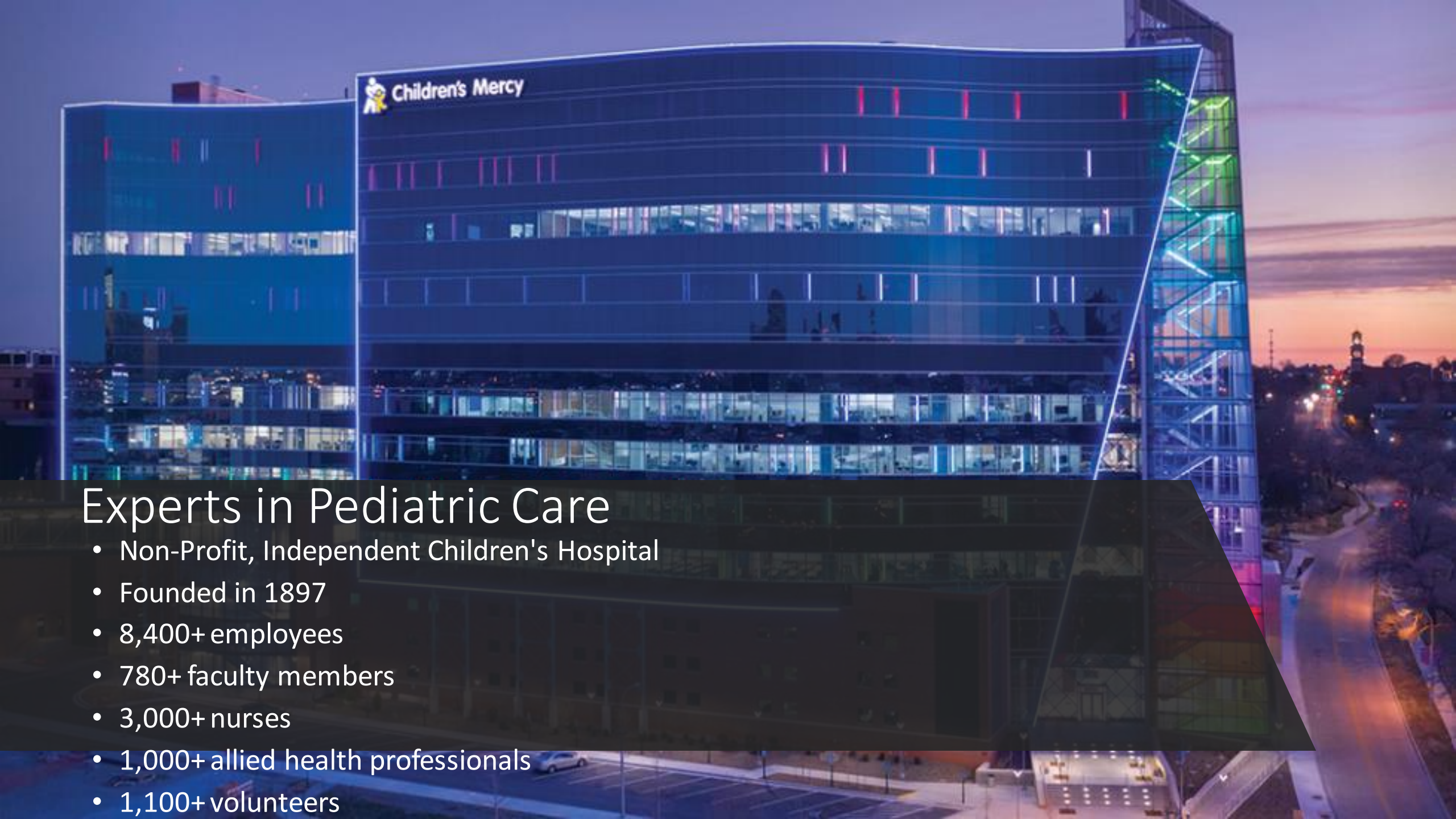
131,754 ED/UC Visits


352,809 OP visits

\*All numbers FY21

**The Region's  
Pediatric Health  
System of Choice**





 Children's Mercy

# Experts in Pediatric Care

- Non-Profit, Independent Children's Hospital
- Founded in 1897
- 8,400+ employees
- 780+ faculty members
- 3,000+ nurses
- 1,000+ allied health professionals
- 1,100+ volunteers

# Children's Mercy Integrated Care Solutions

**Our Mission:** To improve the health and well-being of children through integrated pediatric networks in the greater Kansas City area that are **value-based, community-focused, patient-centric, and accountable for the quality and cost of care.**

## Pediatric Care Network (PCN)

Network for Medicaid Population

## Children's Health Network (CHN)

Clinically Integrated Network for Commercial/Self Funded Employer Populations

## Children's Mercy Affiliated Practices (CMAPs)\*

Wholly-Owned CMH Subsidiaries Community-Based Pediatric Group Practices

## Physician Business Partners (PBP)

(f/k/a Children's Mercy Health Network)

- Group Purchasing
- Education
- Vaccine Programs
- Business Support Services

## KidCare Anywhere\*

Network of Community-Based and CMH Pediatrics to provide virtual office visits (non-facilitated telehealth)

## School-Based Services\*

Provision of school-based clinical services

Learn more about our networks at: <https://www.cmics.org/>

# Why a School Based Social Work Partnership?

# School Based Partnerships

Athletic Trainers

Sports Physicals

School-based Health Center

School Nurse Conference

Disease Specific Programs

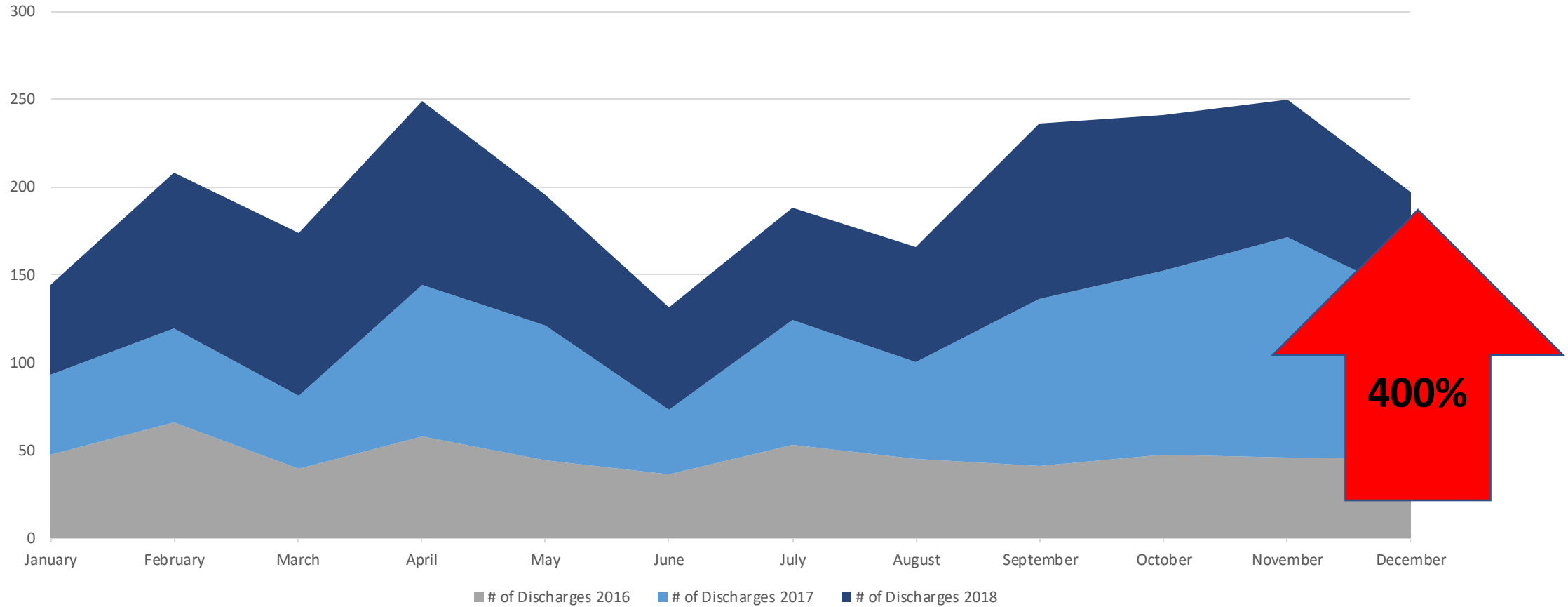
Health Screenings

Anti-bullying Program

Staff Training

Community Health Worker

# Behavioral Health Admissions





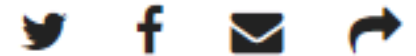
# Kansas City Suicide Epidemic

THE KANSAS CITY STAR.

**Teen suicides are reaching record highs, forcing schools to 'break the silence'**

BY RICK MONTGOMERY, MARÁ ROSE WILLIAMS, AND KELSEY RYAN *THE KANSAS CITY STAR*

DECEMBER 10, 2017 07:00 AM, UPDATED DECEMBER 10, 2017 08:00 AM





# School Based Partnerships



ARTICLE | July 28, 2016

## Hospital-school Partnerships Benefit Students and the Community

 Share

< 0

 Tweet

< 0

 Google +

< 0

 Share

< 0

 Email

 Print

How can Children's  
Mercy help?

# THE KANSAS CITY STAR.

## **Children's Mercy partners with Blue Valley schools to bring social workers to district**

By Katy Bergen

[kbergen@kcstar.com](mailto:kbergen@kcstar.com)



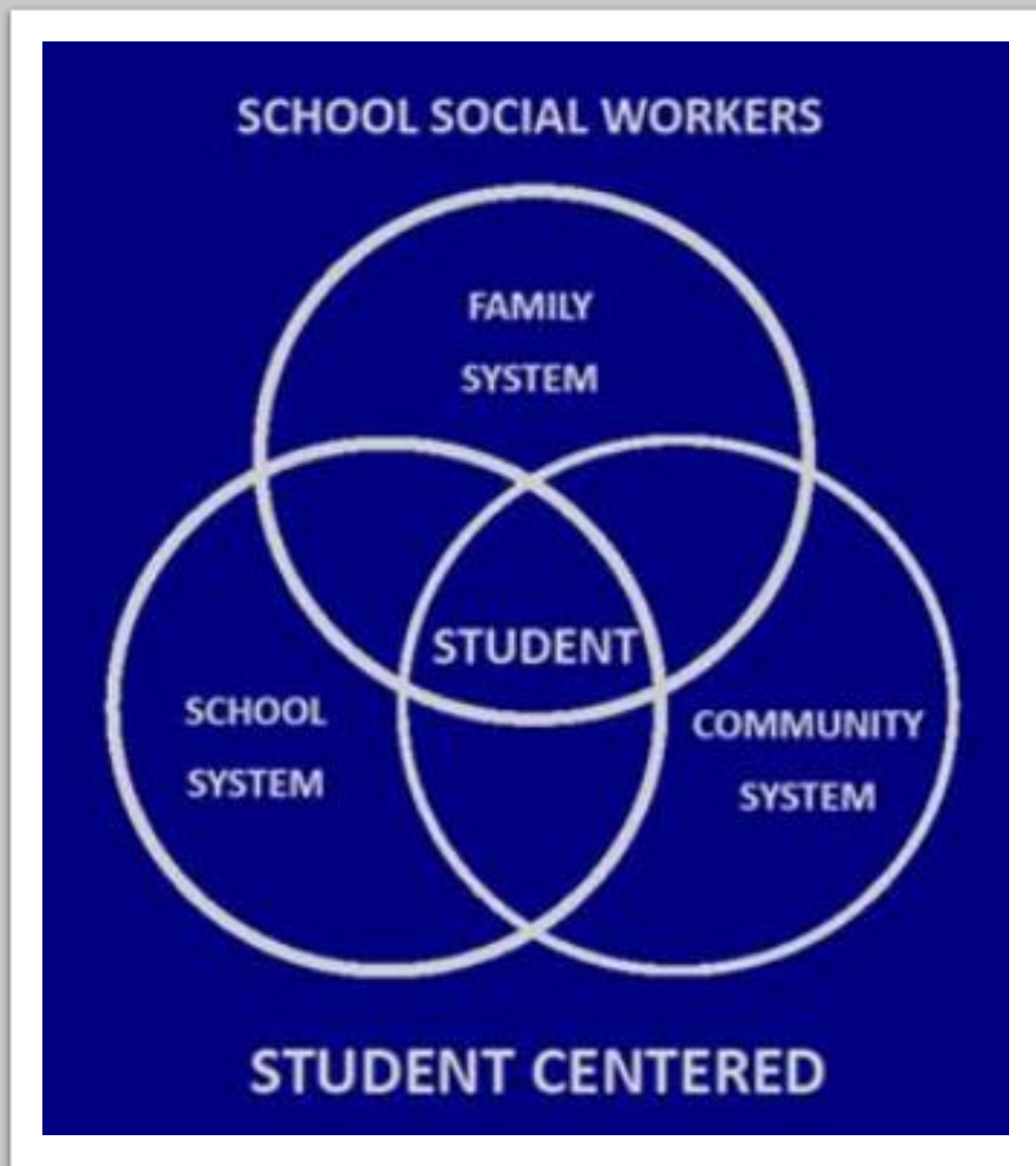
JULY 10, 2017 07:00 AM, UPDATED JULY 10, 2017 04:28 PM





# What is School Based Social Work?

School Social Work promotes social, emotional, behavioral and academic success through collaboration with students, families, staff and community partners.



Early 1900's

- New attendance laws
- New focus on juvenile delinquency
- Mental hygiene movement



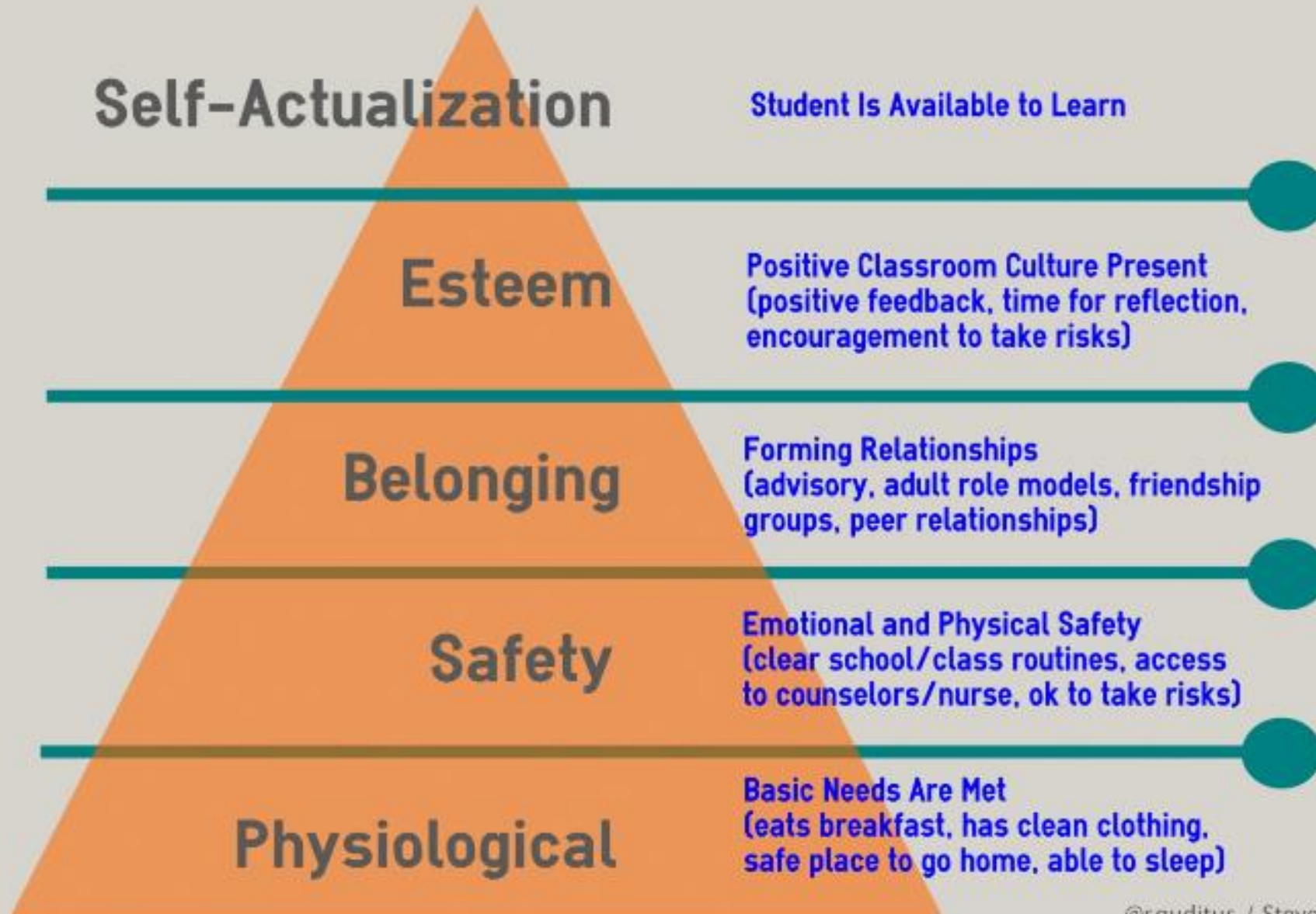
# What do School-Based Social Workers do?

School-based Social Workers serve as a link between home, school and community and use theory, practice and research to implement programs and services.





# Maslow's Hierarchy of School Needs



# Our Team

28 social workers

Peer leaders for each grade level

Quarterly grade level meetings

Monthly all staff meetings

Monthly social work supervision

Monthly report to district leaders with success stories

School  
Social  
Work  
Role

---

Generalist approach

---

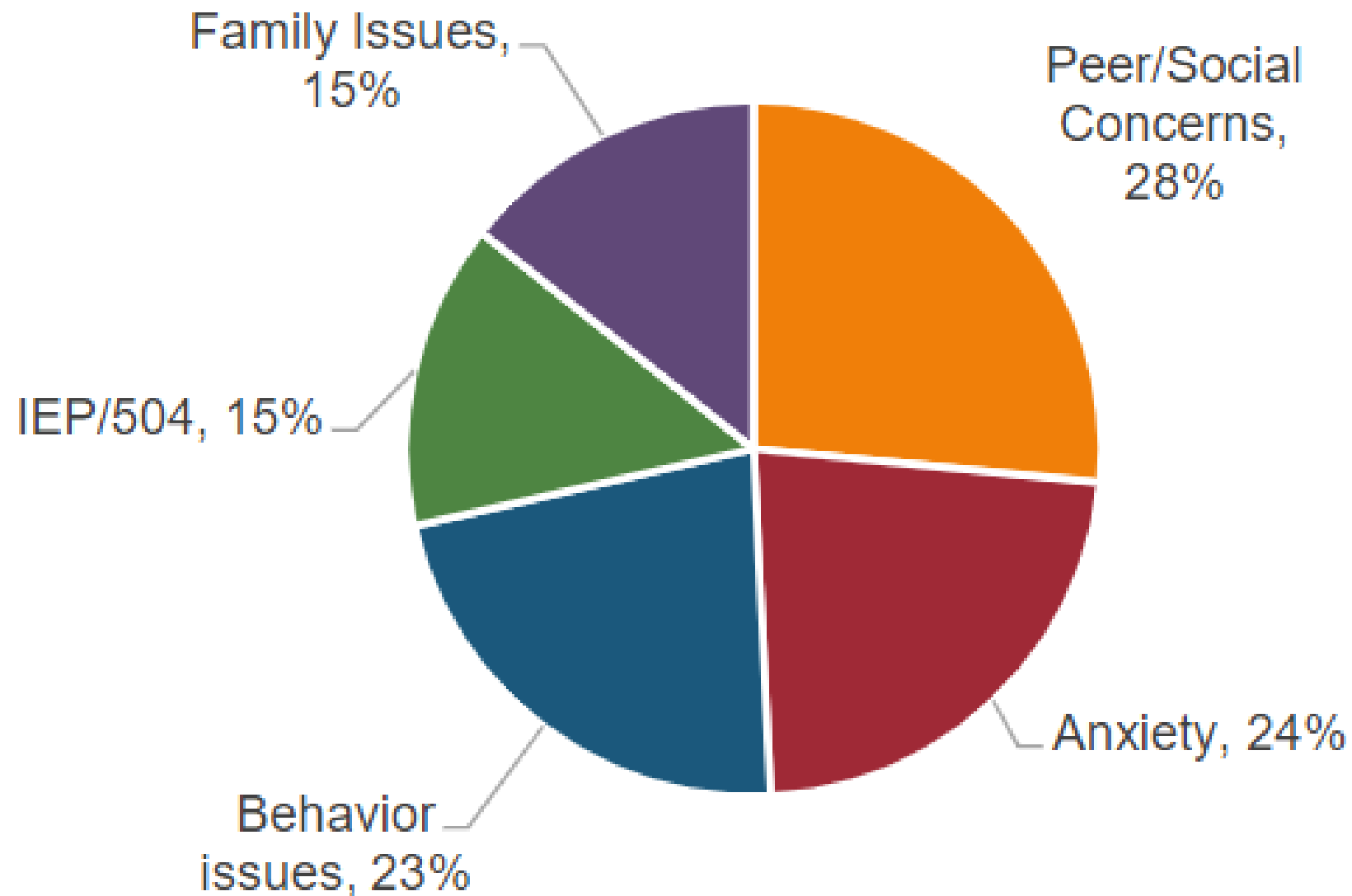
SDOH

---

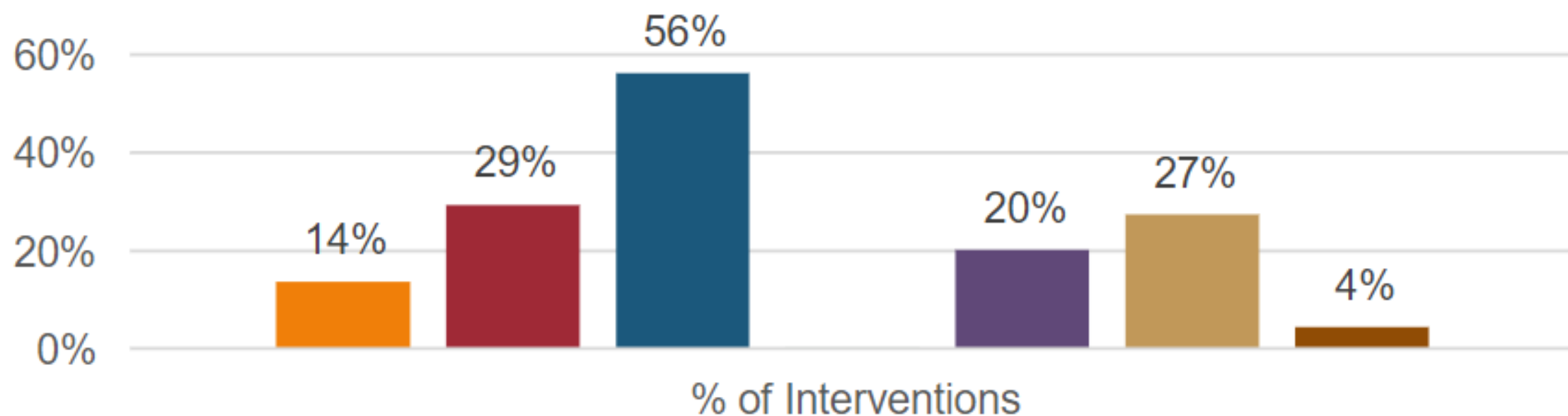
Brief Solutions Focused  
Interventions



## Top 5 Reasons for Referral to Social Work



## Type of Interventions Provided



■ Advocacy

■ Behavioral Intervention

■ Coping Strategies/Skill Building

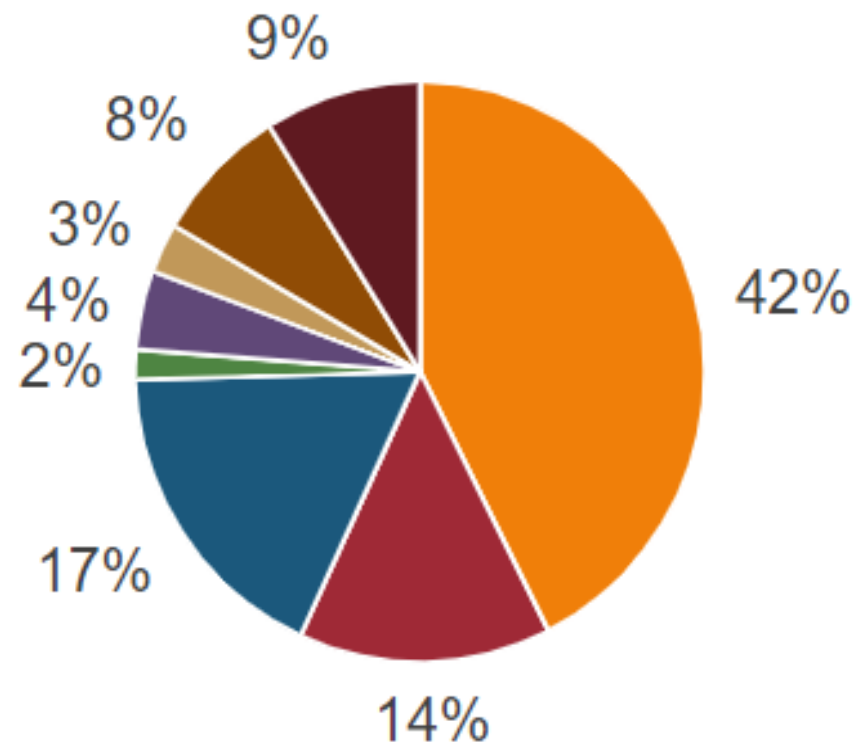
■ Financial Assistance

■ IEP/504 Support

■ Relationship Building

■ Resources

## Students Referred to Social Work By



- Teacher
- Parent/Caregiver
- School Counselor
- School Psychologist
- CARE/SIT Team
- Self
- School Administrators
- Other School Staff
- Community



# Initial Results

---

38%↓ in  
suspensions at the  
elementary level

---

100% approval from  
Principals



# Year 1 Results

Over 2,000 students served

Over 7,700 hours of  
interventions

93% satisfaction rating among  
teachers & administrators

## Year 2 Results

1,667 students served

Nearly 10,000 hours of  
interventions with students

96% satisfaction rating among  
teachers & administrators



# Overall Results

35% decrease in Discipline-Related Events

73% reduction in Discipline 10+ Unique Events rate

ZERO long-term suspensions in 2017-2018, compared to 13 in 2016-2017

# Challenges

HIPAA vs FERPA

Documentation

Computer systems

Turf issues/Role clarification

Culture

Funding

HR/Compensation



*"I cannot even begin to explain how thankful I am for the investment that the social worker has made into our daughter. To be honest, I am flabbergasted that a resource like this is available. Never in my wildest dreams would I have imagined that someone would be willing (or able) to drop everything that they were doing, drive to our house, meet with our daughter in her own room and then spend an ENTIRE day helping us get her the help she needs. This is going waaaay above and beyond and we will be eternally grateful to the social worker and BV in general for providing a service like this."*

*"Simply put, I do not know how we ever got along without her. I hope our school never loses having access to a full time social worker...I cannot tell you how much she impacted our lives and made teaching and being able to focus on our jobs possible."*

*Elementary School Teacher*

*"I had a suicidal student. The social worker met with my student, contacted parents, and made a [referral] for in-home counseling based on her conversation with the student. This was extremely helpful in allowing me to return back to teaching and helping my student feel heard and cared for."*

*High School Teacher*

*"I work in SpEd and before we had the Social Workers, I spent a lot of my time doing 'well being' work. So much so, that I was not always able to service the IEP goals as I would have liked. This year that need was supported by them and I could focus on my true scope of practice."*

*Middle School SpEd staff*

# Thank You

Carey Spain

---

[cspain@cmh.edu](mailto:cspain@cmh.edu)